



20 Edgewater Close Eaglehawk VIC

4 2 2

Tucked off popular Simpsons Road and right next to a natural bushland reserve makes this quality home a top contender for peace and privacy.

No-through Edgewater Close boasts a fantastic position within walking distance of beautiful Lake Tom Thumb, via the creek trail.

The home itself is a real surprise package, as it features four bedrooms and two bathrooms. Young families, investors and downsizers will appreciate the extra space that fourth bedroom affords.

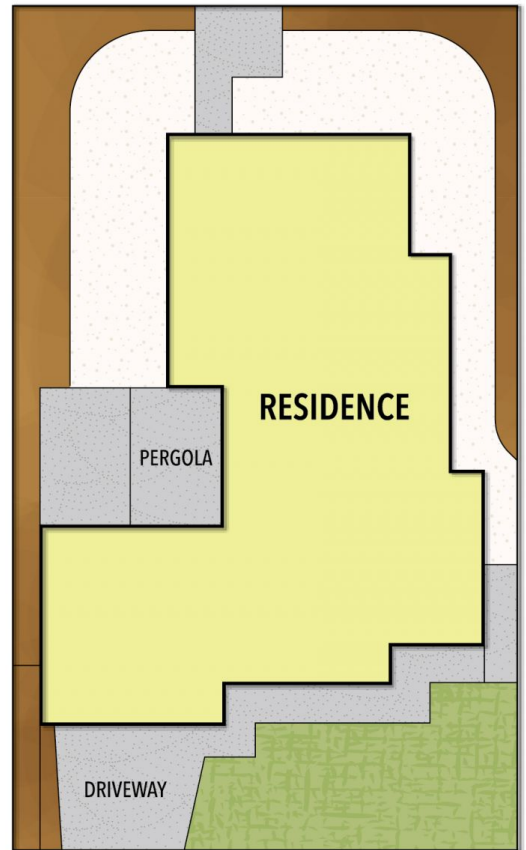
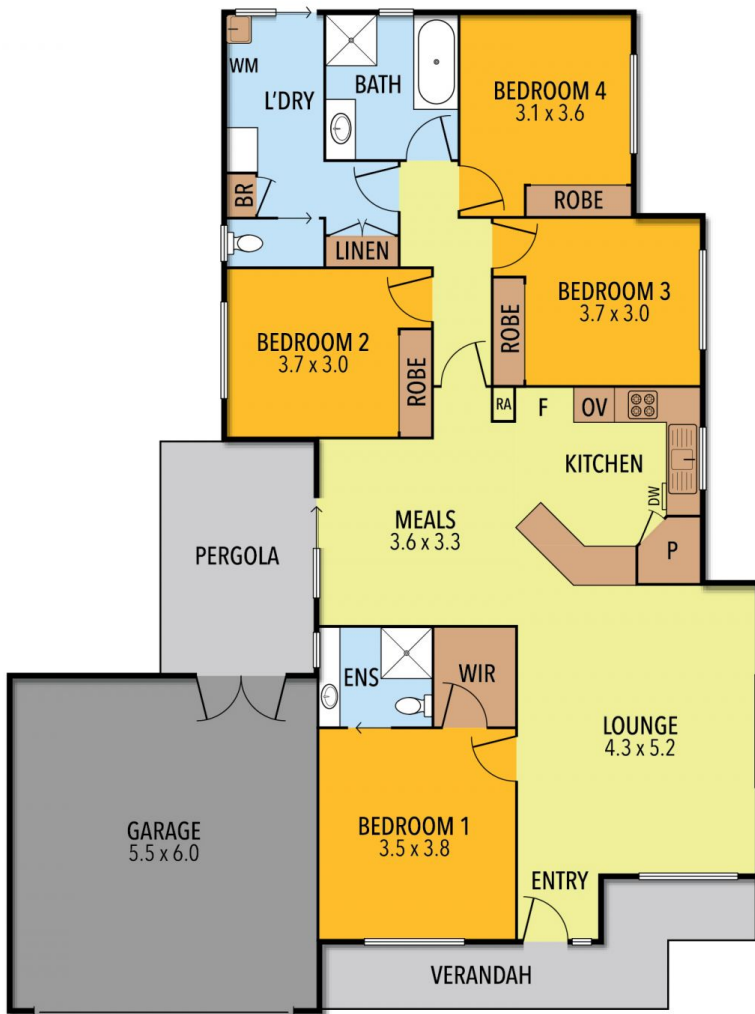
Living areas consist of a front lounge room, and a central open-plan dining and kitchen zone.

The kitchen is a beauty, with its corner pantry and generous bench space/breakfast bar. Cooking facilities

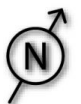
Price : \$ 518,500
Land Size : 401 sqm
View : <https://www.bendigorealestate.com.au/sale/vic/greater-bendigo-region/eaglehawk/residential/house/7910396>



Paul Byrne
03 5441 4555



INT	: 130 M ²
PERGOLA	: 12 M ²
GARAGE	: 34 M ²
VERANDAH	: 11 M ²
TOTAL APPROX	: 20.1 SQUARES



THE ABOVE PLAN IS AN ARTIST'S IMPRESSION ONLY, IT INCLUDES ELEMENTS THAT ARE FOR DISPLAY PURPOSES ONLY AND MAY NOT BE TO SCALE. LANDSCAPING SHOWN IS INDICATIVE ONLY. DIMENSIONS ARE APPROXIMATE.