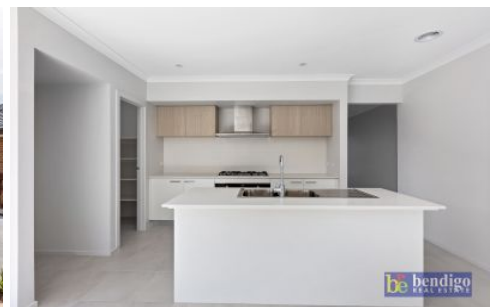




BOOK AN INSPECTION
By clicking "Book an inspection" you'll be immediately taken to register your details and have access to our booking system to choose from a list of available inspection times.

SELECT YOUR TIME
Our Listing Consultant will show you the property at a time that suits your convenience wherever possible.

KEEP UPDATED
By registering for an inspection, you will secure a place at the inspection and will be kept upto date with changes or cancellations.



5 Lampra Way Huntly VIC

4 2 2

****Application pending no inspections available****

Enjoy this modern brand new family home in serene Huntly.

This spacious 4-bedroom, 2-bathroom property features a master bedroom, with a walk-in robe, 3-piece ensuite. The remaining three bedrooms all with built-in robes, providing ample storage space for the family.

The heart of the home has a generously sized kitchen with a walk-in pantry, spacious island, dishwasher and energy efficient appliances. The open plan dining and living area, perfect for entertaining or family gatherings.

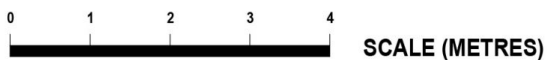
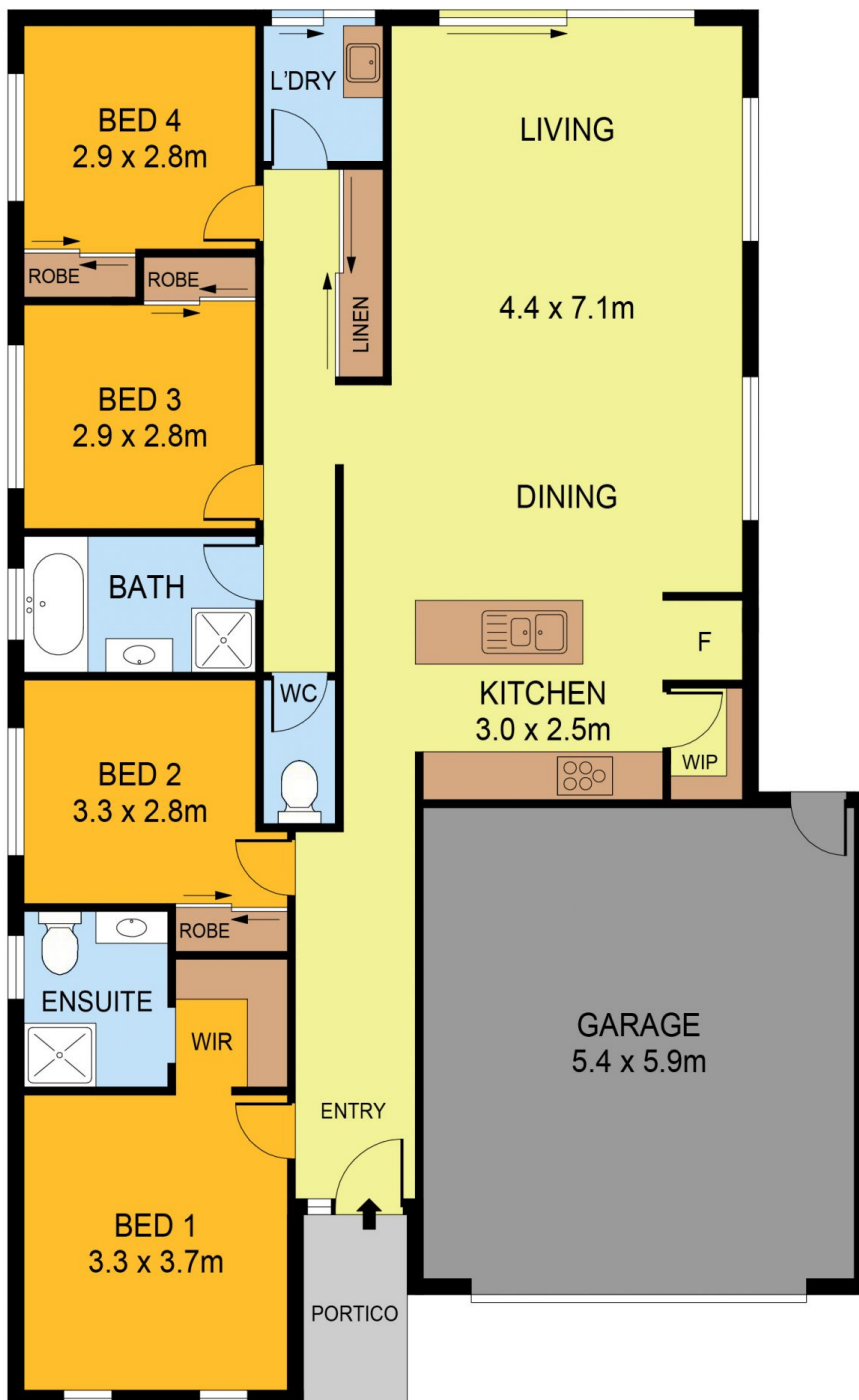
A double garage with remote access for secure parking,

Situated in a peaceful neighbourhood close to schools,

View : <https://www.bendigorealestate.com.au/lease/vic/greater-bendigo-region/huntly/residential/house/7972556>



Lyndall Joiner
03 5441 4555



SCALE IN METRES. INDICATIVE ONLY. DIMENSIONS ARE APPROXIMATE. ALL INFORMATION CONTAINED HEREIN IS GATHERED FROM SOURCES WE BELIEVE TO BE RELIABLE. HOWEVER WE CANNOT GUARANTEE IT'S ACCURACY AND INTERESTED PARTIES SHOULD RELY ON THEIR OWN ENQUIRIES.
Ref. No: 240405

INT	:	132m ²
GARAGE	:	32m ²
PORTICO	:	3m ²

5 LAMPRA DRIVE