



46 Axedale - Goornong Road Axedale VIC

4 3 8

Occasionally, a truly exceptional property prepares to change hands and becomes available to a discerning buyer. This special family home is perfect for anyone desiring an outstanding lifestyle change.

Depicting an air of grandeur, this stunning lifestyle property will captivate you with its unparalleled beauty, luxury and sophistication.

The unique Italian inspired villa sits high on the banks of the beautiful Campaspe River at Axedale. It offers executive living, timeless design and the ultimate in entertaining space. The home is set on over 8.6 hectares (21.3 acres) within a professionally landscaped garden of mature ornamental trees, manicured lawns, natural stone paving, feature rock walls and a magnificent fountain.

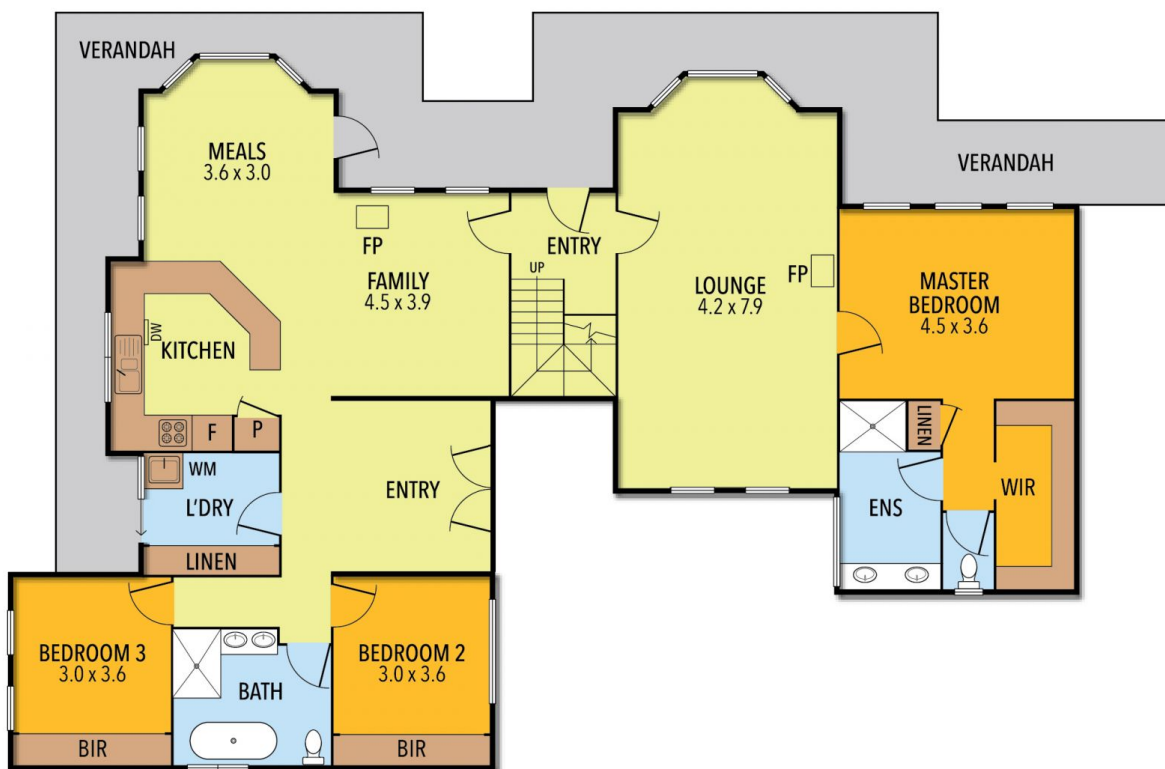
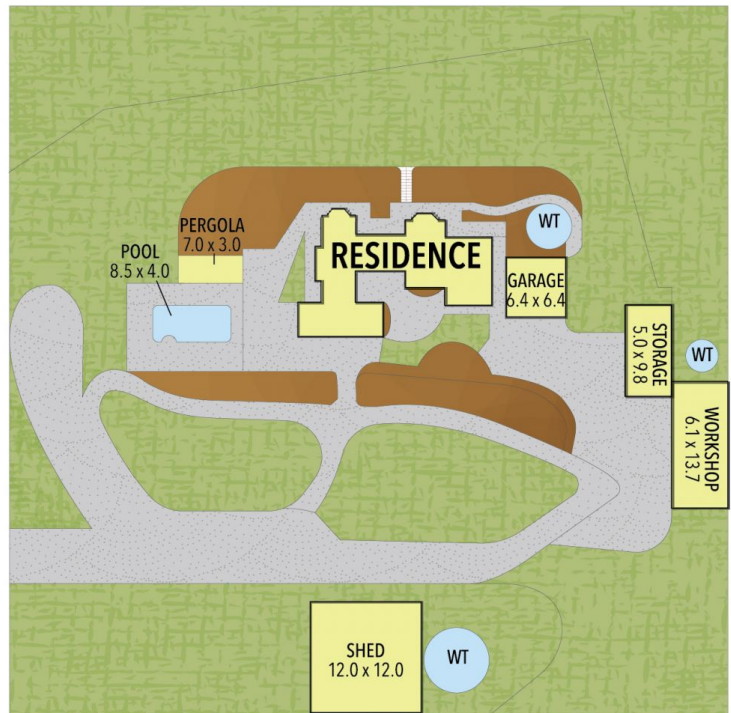
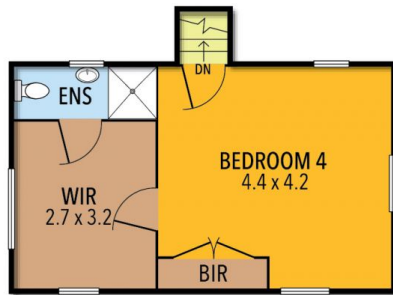
Price : \$ 2,200,055
Land Size : 86400 sqm
View : <https://www.bendigorealestate.com.au/sale/vic/greater-bendigo-region/axedale/residential/house/7980049>



Paul Byrne
03 5441 4555



Angela Walter
03 5441 4555



GROUND FLOOR

INT	: 193 M ²	PERGOLA	: 21 M ²
GARAGE	: 41 M ²	SHED	: 144 M ²
VERANDAH	: 56 M ²	STORAGE	: 49 M ²
WORKSHOP	: 83 M ²		
TOTAL APPROX	: 587 M ² (63 SQUARES)		



THE ABOVE PLAN IS AN ARTIST'S IMPRESSION ONLY, IT INCLUDES ELEMENTS THAT ARE FOR DISPLAY PURPOSES ONLY AND MAY NOT BE TO SCALE. LANDSCAPING SHOWN IS INDICATIVE ONLY. DIMENSIONS ARE APPROXIMATE.